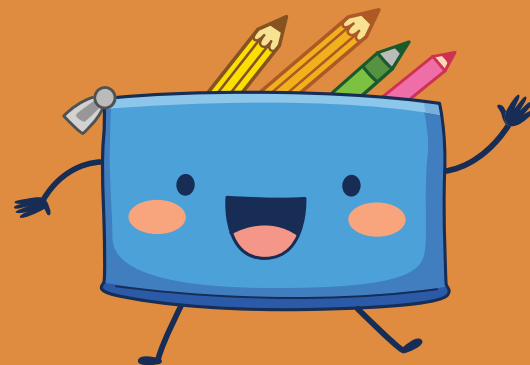
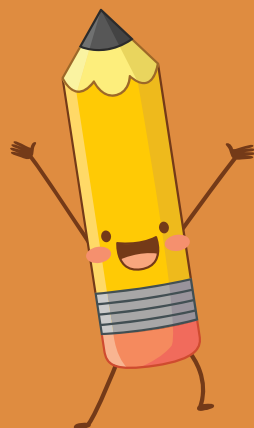


McKinley Elementary School

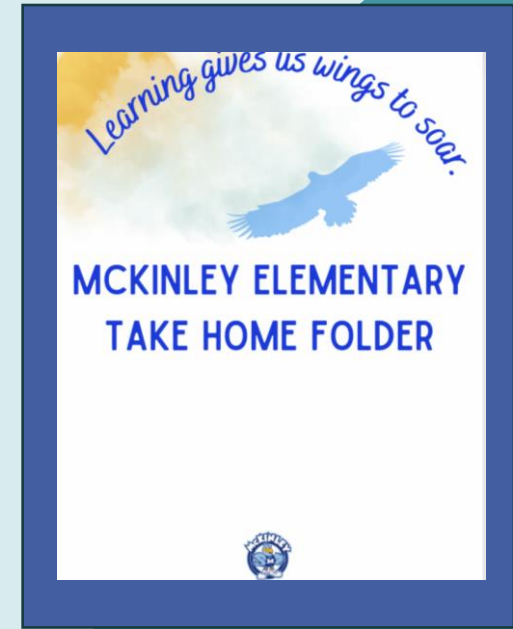
Curriculum Night

August 31, 2023

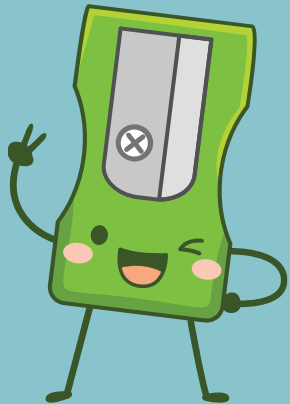


Blue Folder & Book Bag

- Blue Folder should go home each night and come back to school each morning
- Please check your 1st grader's folder and take out old papers
- If you see that something needs to be filled out and returned, please do that in a timely manner (2 days)
- **Left side = Left at home**
- **Right side = Right back to school**
- We will add additional routines in pockets soon
- Book bag information to come!



Attendance Matters!



- We want and need your child present and on time every day!
- The doors open at 7:30, students get their breakfast and head to their classrooms to eat.
- Students are expected to be in their classrooms at 7:45 and Class begins.
- If your child will be absent, please call the school at 515-242-8423 and let the office know.
- *Research shows that students who attend school on a consistent basis achieve at higher levels.*
- *At McKinley we will be celebrating students who have perfect attendance each month.*

Zones of Regulation

A Social Emotional Learning Curriculum and Regulation Program

A common language for communication, problem solving, and emotional understanding

Increased self-awareness and social and emotional skills

Tools to Try – Weekly Focus
Character Trait Monthly focus



Supplementary Reproducible E for Elementary Ages

THE ZONES OF REGULATION

The ZONES of Regulation

			
Blue Zone Sad Bored Tired Sick	Green Zone Happy Focused Calm Proud	Yellow Zone Worried Frustrated Silly Excited	Red Zone overjoyed/Elated Panicked Angry Terrified

EL Module Overview



Module 1
Tools and Work



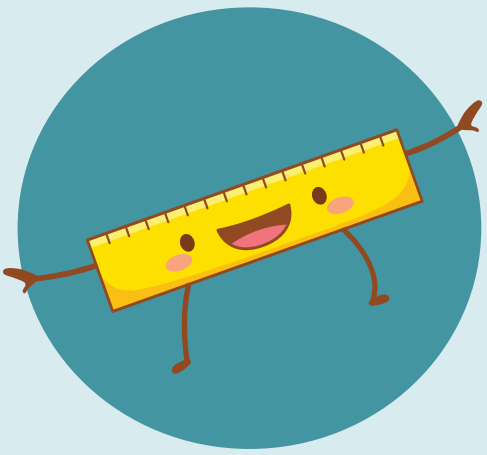
Module 2
What's Up in the Sky: A Study of the Sun, Moon and Stars



Module 3
Growing as Researchers: Birds' Amazing Bodies



Module 4
Caring for Birds

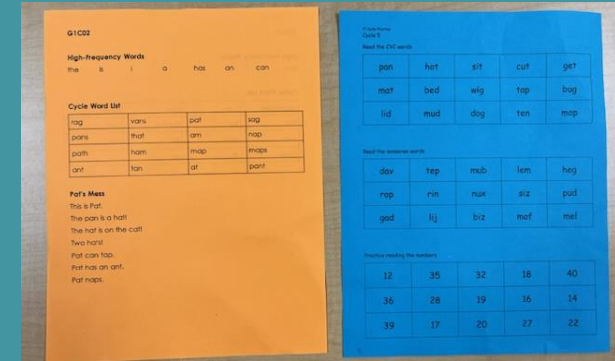


Math Overview

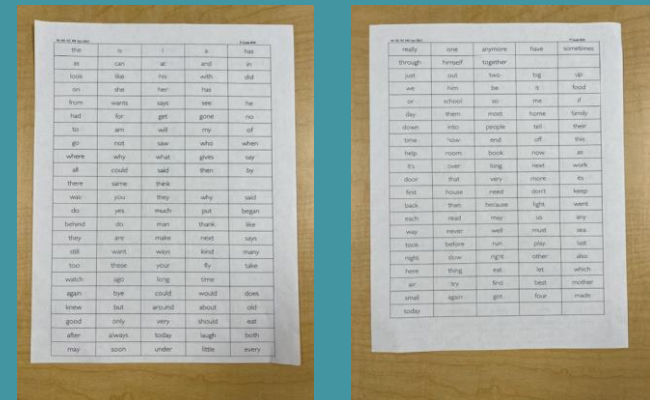
- Develop an understanding of place value (group objects into tens and ones)
- Add and Subtract within 20 using a strategy
- Fluently Add and Subtract within 10
- Practice linear measurement
- Describe attributes of geometric shapes

Weekly Routines for Home

- Cycle Sheets (Orange and Blue)



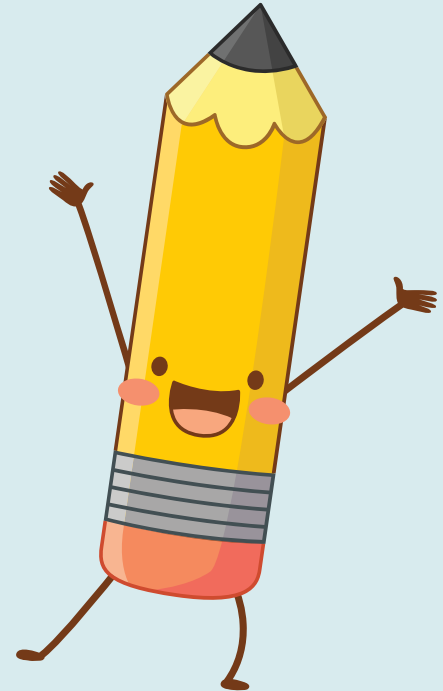
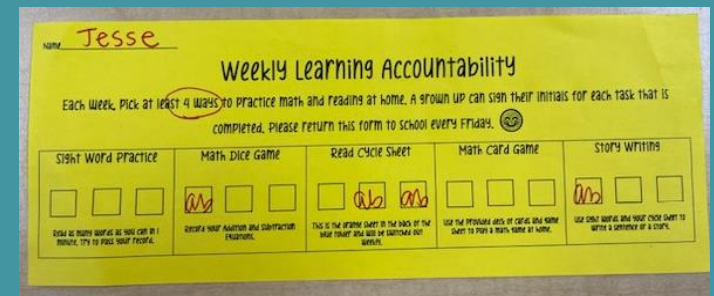
- Sight Word Practice (White)



- Reading books at home



- Learning Accountability Slip



Questions?

**Reminder to Sign Up
for Fall Conferences
in the main hallway!**



CALLING ALL
Eagles!

VOLUNTEER AT MCKINLEY!



*Our students need YOU to volunteer as: classroom
assistant, lunchroom duty, food pantry, garden, field trips,
AND MORE!!*

HAVE FUN AND ENGAGE WITH YOUR STUDENT!
*To volunteer, scan the QR Code above to fill out the
application.*

Once approved, the approval lasts 5 years!