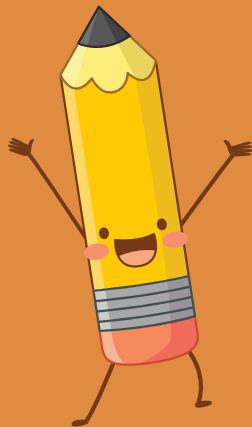


McKinley Elementary School

Curriculum Night

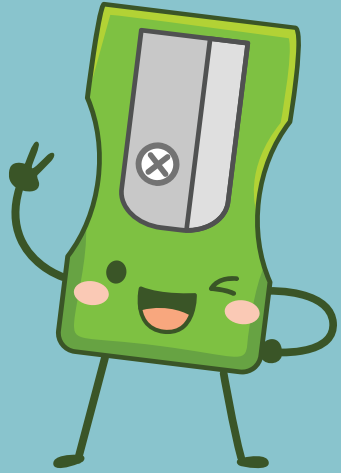
August 31, 2023



Blue Folder & Book Bag



Attendance Matters!



- We want and need your child present and on time every day!
- The doors open at 7:30, students get their breakfast and head to their classrooms to eat.
- Students are expected to be in their classrooms at 7:45 and class begins.
- If your child will be absent, please call the school at 515-242-8423 and let the office know.
- *Research shows that students who attend school on a consistent basis achieve at higher levels.*

Zones of Regulation

A Social Emotional Learning Curriculum and Regulation Program

- A common language for communication, problem solving, and emotional understanding
- Increased self-awareness and social and emotional skills

Tools to Try – Weekly Focus
Character Trait Monthly focus



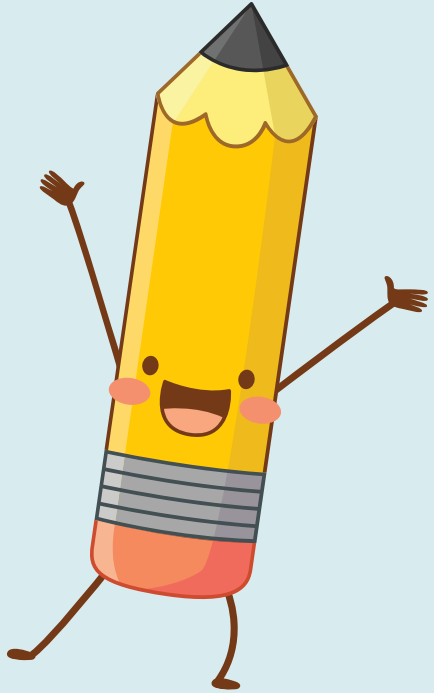
Supplementary Reproducible E for Elementary Ages

THE ZONES OF REGULATION

The ZONES of Regulation

Blue Zone Sad Bored Tired Sick	Green Zone Happy Focused Calm Proud	Yellow Zone Worried Frustrated Silly Excited	Red Zone overjoyed/Elated Panicked Angry Terrified

Weekly Routines



EL Module Overview



Module 1
Schools and Community



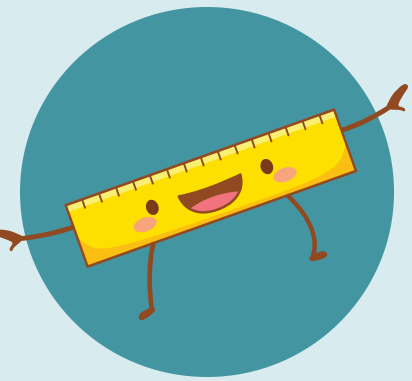
Module 2
Learning through Science and Story: Fossils Tell of Earth's Changes



Module 3
Researching to Building Knowledge and Teach Others: The Secret World of Pollination



Module 4
Providing for Pollinators



Math Overview

- Place value: hundreds, tens, and ones
- **Know from memory all sums of two one-digit numbers**
- Fluently add and subtract within 100 using strategies based on place value
- Use standard units of measure
- Describe and analyze shapes