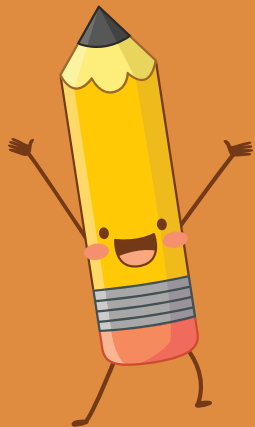


McKinley Elementary School

# Curriculum Night

August 31, 2023



# Blue Folder & Book Bag

Students will need to leave toys, games, or personal items at home not in their backpacks, lockers, or desks.

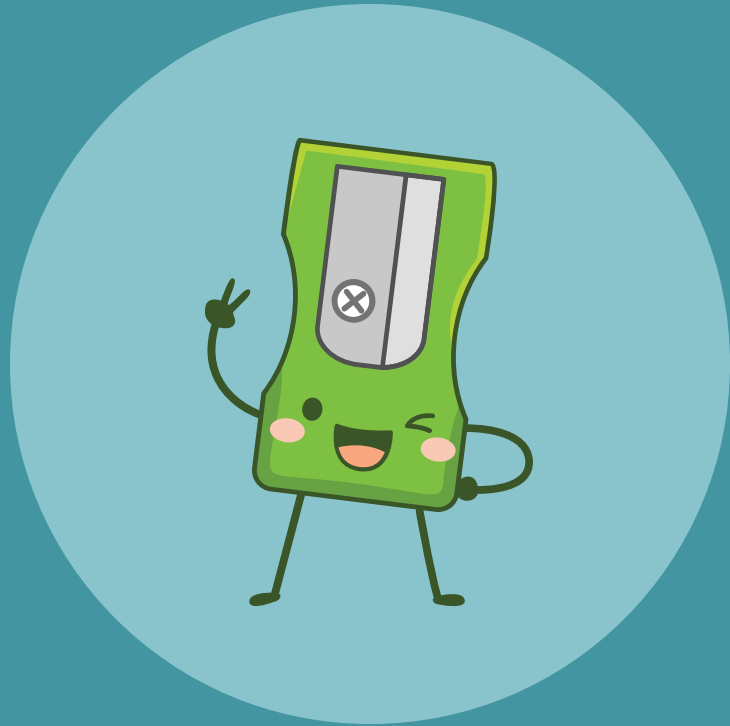
Students who have a phone will need to sign a phone contract and turn their phones into their teacher every day. Teachers will return phones to them by the end of the day.

The Blue folder and Book Bag will leave and come back to school every day.

The Blue Folder is an important communication tool that will help students own their learning and practice responsibility.



# Attendance Matters!



- We want and need your child present and on time every day!
- The doors open at 7:30, students get their breakfast and head to their classrooms to eat.
- Students are expected to be in their classrooms at 7:45 and class begins.
- If your child will be absent, please call the school at 515-242-8423 and let the office know.
- *Research shows that students who attend school on a consistent basis achieve at higher levels.*

# Why Does Attendance Matter?

Attendance is important to academic success!

Every minute counts! If students don't show up for school regularly, they miss out on fundamental reading, math, and important social skills. Building the habit of good attendance will carry on into future responsibilities.

What families can do:

School doors open at 7:30, breakfast will be served from 7:30-7:45. School starts at 7:45. Please have your student at school before 7:45 a.m. so they are not marked tardy and don't miss any learning.

Set a regular bedtime and morning routine. Set a bedtime appropriate for your child's age, so your child gets enough rest. Experts recommend kids get 9-11 hours of sleep each night. (See chart on the next slide to determine bedtime for your students' age.)

For a smooth morning, Lay out clothes and pack backpack the night before.

Tardies DO add up and will count as full school days absent.

Don't permit missing school unless your child is truly sick. If you're unsure, bring them in to our school nurse.

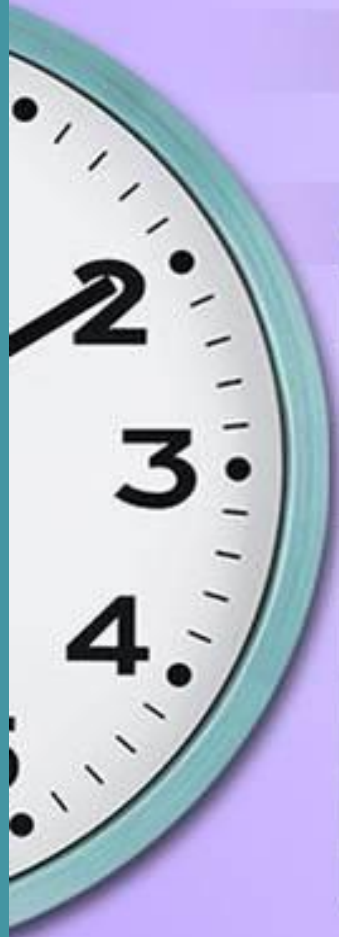
Avoid medical appointments and extended trips during the school day.

Seek support from school staff or community to help with transportation, health problems or a safe path to school.

# Attendance Matters!

Each month we will provide monthly achievement certificates and incentives for students with perfect attendance. Our goal for this year is to have 95% of McKinley students on time every day.

Thank you for your help!



## AT WHAT TIME SHOULD YOUR CHILD GO TO BED

Age	Wake-up time						
	6:00 AM	6:15AM	6:30AM	6:45AM	7:00AM	7:15AM	7:30AM
Sleeping time							
5	6:45PM	7:00PM	7:15PM	7:30PM	7:30PM	8:00PM	8:15PM
6	7:00PM	7:15PM	7:30PM	7:30PM	8:00PM	8:15PM	8:30PM
7	7:15PM	7:15PM	7:30M	8:00PM	8:15PM	8:30PM	8:45PM
8	7:30pm	7:30PM	8:00PM	8:15PM	8:30PM	8:45PM	9:00PM
9	7:30PM	8:00PM	8:15PM	8:30PM	8:45PM	9:00PM	9:15PM
10	8:00PM	8:15PM	8:30PM	8:45PM	9:00PM	9:15PM	9:30PM
11	8:15PM	8:30PM	8:45PM	9:00PM	9:15PM	9:30PM	9:45PM
12	8:15PM	8:30PM	8:45PM	9:00PM	9:15PM	9:30PM	9:45PM

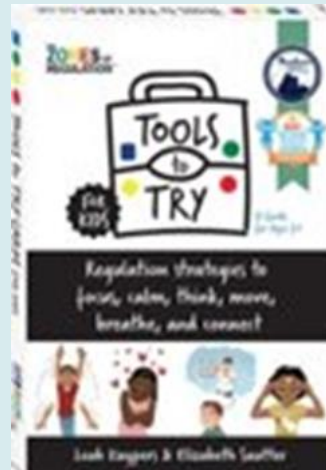
# Zones of Regulation

## A Social Emotional Learning Curriculum and Regulation Program

- A common language for communication, problem solving, and emotional understanding
- Increased self-awareness and social and emotional skills

Tools to Try – Weekly Focus

Character Trait Monthly focus



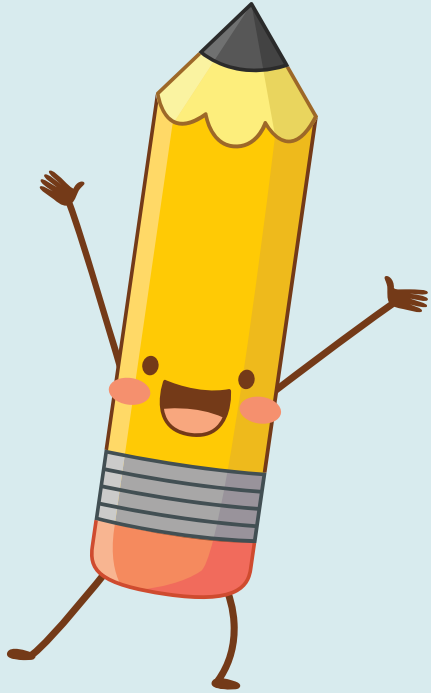
Supplementary Reproducible E for Elementary Ages

THE ZONES OF REGULATION

## The ZONES of Regulation

<b>Blue Zone</b> Sad Bored Tired Sick	<b>Green Zone</b> Happy Focused Calm Proud	<b>Yellow Zone</b> Worried Frustrated Silly Excited	<b>Red Zone</b> overjoyed/Elated Panicked Angry Terrified

# Weekly Routines



## Daily Schedule:

7:30 – 7:45 Arrival and Breakfast  
7:45 – 8:15 Morning Meeting  
8:15 – 8:30 Class wide WIN  
8:30 – 9:20 Extended Core (Art, Music, PE)  
9:20 – 11:40 Math Core and Literacy Core  
11:40 – 12:10 Lunch and Recess  
12:15 – 12:30 Mindfulness/SEL  
12:30 – 1:00 Math WIN  
1:00 – 1:45 All Block  
1:45 – 2:00 Recess  
2:00 – 2:30 Literacy WIN  
2:30 – 2:40 Closing Circle, Clean Up & Dismissal

## Homework:

**Students will have daily homework in math and literacy. Homework is DUE every FRIDAY.**

## Communication:

**Friday Folders will come home every Friday. Please look over with your child, sign it, and return to school on MONDAY.**

# EL Module Overview



## Module 1

Poetry, Poets, and Becoming Writers



## Module 2

Researching to Building Knowledge and Teach Others:  
Animal Defense Mechanisms



## Module 3

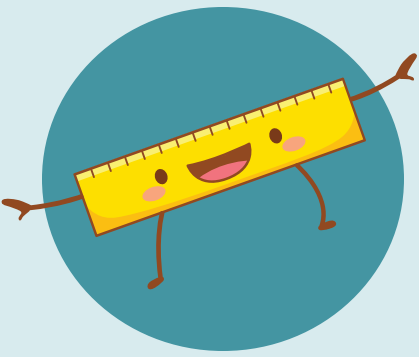
The American Revolution



## Module 4

Responding to Inequality: Ratifying the 19<sup>th</sup> Amendment





# Math Overview

- **Multi-digit Multiplication**
  - **Long Division** (3-digits divided by 1-digit)
  - Addition and Subtraction of fractions
  - Classify geometric figures
- \* Students need to have multiplication and division facts memorized!**